



Microwave Touchless Switch (ClearWave)

Instruction Manual

HOTRON LTD.

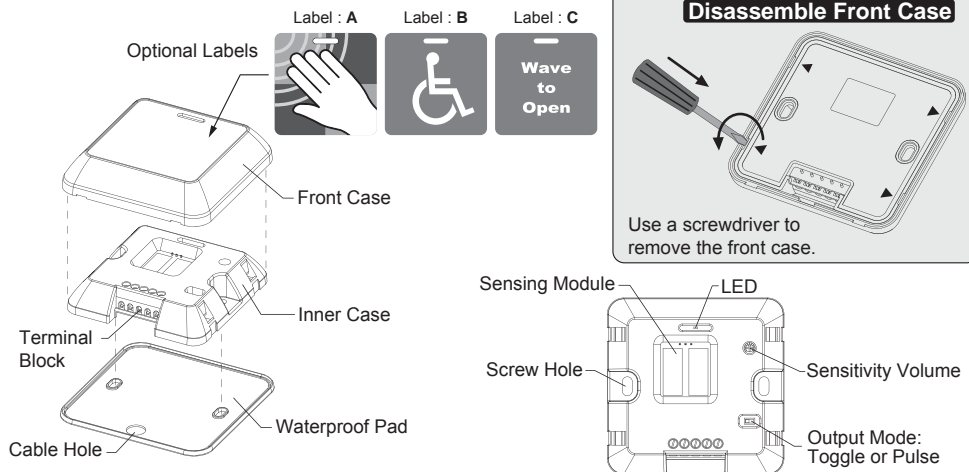
The ClearWave is a highly sensitive, high performance switch designed to activate automatic doors by detecting the movement of a person or object. For the safe and accurate use of this product, please read this instruction manual carefully.

1 Technical specifications

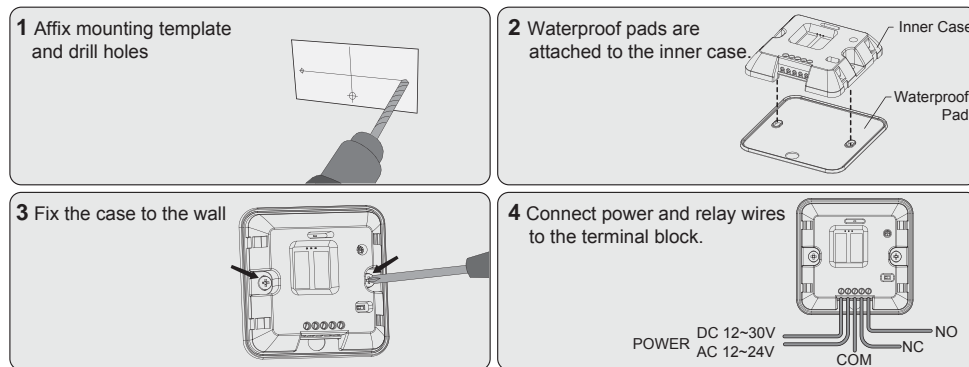
Technology : Microwave motion sensor
Microwave module : 24.125GHz
Product Size : 85.9mm × 85.9mm × 20mm (W × L × H)
Detection range [hand] : 10~50cm ±3~5cm
Detection mode : Motion (Bi-directional)
Speed of target : Min. ±3cm/s, Max. ±1.5m/s

Power supply : DC 12~30V, AC 12~24V
Current consumption : < 1.4W
Output : Relay Contact (1A/24VDC)
Output hold time : 1.2Sec. (PULSE mode)
Operating Temp/Humidity : -20°C~+60°C/0~90%
International Protection : IP54

2 General Information



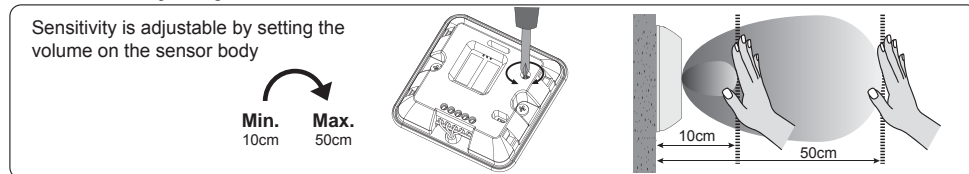
3 Installation Guide



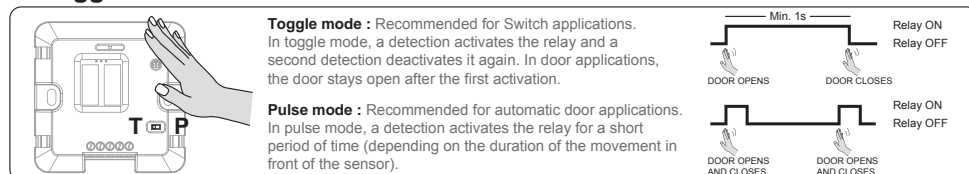
Caution

Do not supply power during installation.
 Do not disassemble or modify the device, it may cause fire or electric shock

4 Sensitivity Adjustment



5 Toggle mode / Pulse mode



6 Mounting Information

